

PC80

INDUSTRIAL IRONER | 2 ROLL - STEAM

8030
8033
8035



PRODUCTIVITY – Parameters of the PC80 can be adjusted to achieve quality results with a variety of items; with speeds up to 148 ft/min.

PRODUCT FEATURES

QUALITY

- All elements that go to make up the flatwork ironers in the PC series are designed with quality in mind, including the geometry, a perfectly polished finish of the bed and the most advanced electronics results in superior ironing quality.

EFFICIENCY

- The combination of high productivity, high heat transfer coefficient of the bed and the controllable ironing pressure translate into efficiency for your business.

ROBUSTNESS

- The extremely durable construction of the PC Series makes them highly resistant to mechanical stresses and thermal expansion.

MAINTENANCE

- The machine's optimum design cuts wear on consumables, such as the padding and reduces maintenance work.
- PC Series ironer components are highly accessible, making maintenance tasks easier and shortening work time.

HEAT CAPTURE TECHNOLOGY

- The thermal insulation in the covers (optional) enable you to save energy, take advantage of existing heat and achieve higher performance. At the same time, the laundry environment is more pleasant for operators because heat is captured within the ironer — improving operator productivity.

LONGER LIFE, BETTER RETURNS

- The long life cycle of PC Series ironers ensure uninterrupted working and a return on your investment. PC Series are backed by a 7/5/3-year manufacturer's warranty.

INTELI CONCEPT

- Working with the controls of any of the flatwork ironers in the PC Series is extremely easy. A highly intuitive system of icons means any operator can understand quickly how the machine works.

RIGID TECHNOLOGY

- The use of three-dimensional design and parametric simulation technology allows Girbau to offer a bed with a wide fluid passage and a capacity for transmitting heat to fabric that make it possible to iron at high speeds while assuring high quality.
- Equipped with a large ironing surface, even the bridge between the beds is heated to take maximum advantage of the surface area, achieving a better quality and a uniform temperature without causing damage to the linen.
- The S-COIL design assures uniform heating of the ironing surface.
- A pressure gradient with maximum concentration ensures high-quality ironing.
- The floating, self-aligning chest support system enables the flatwork ironer to cope with the thermal expansion and mechanical stresses, while maintaining a constant pressure distribution over time.

DIRECT TRANSMISSION

- The gear motor transmits power to the roll and is electronically controlled through latest-generation encoders and inverters that allow the roll speed to be adjusted.

PLUG & PLAY; EASY INSTALLATION

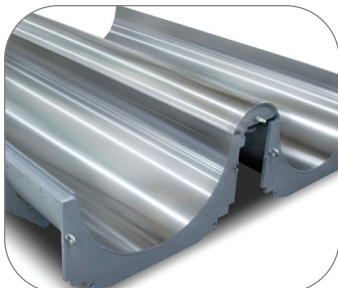
- The design of PC Series provides easy delivery and installation.
- Start-up is agile, fast and simple, thereby reducing installation time.

STEAM IRONER PROVIDES MAXIMUM EFFICIENCY

- Optional temperature control to meet specific ironing requirements
- Requires external heating system

SUPPLIED GAS AND THERMAL OIL

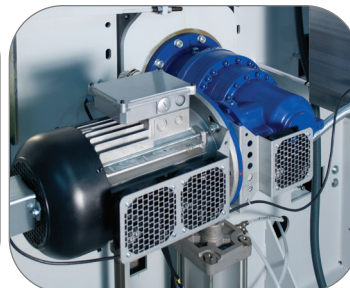
- PC Series flatwork ironers are also available in supplied natural gas or thermal oil versions.
- The gas version delivers 93% efficiency.



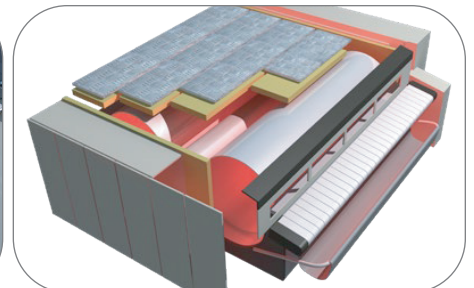
RIGID TECHNOLOGY



CONSTANT PRESSURE & UNIFORM TEMPERATURE



DIRECT TRANSMISSION

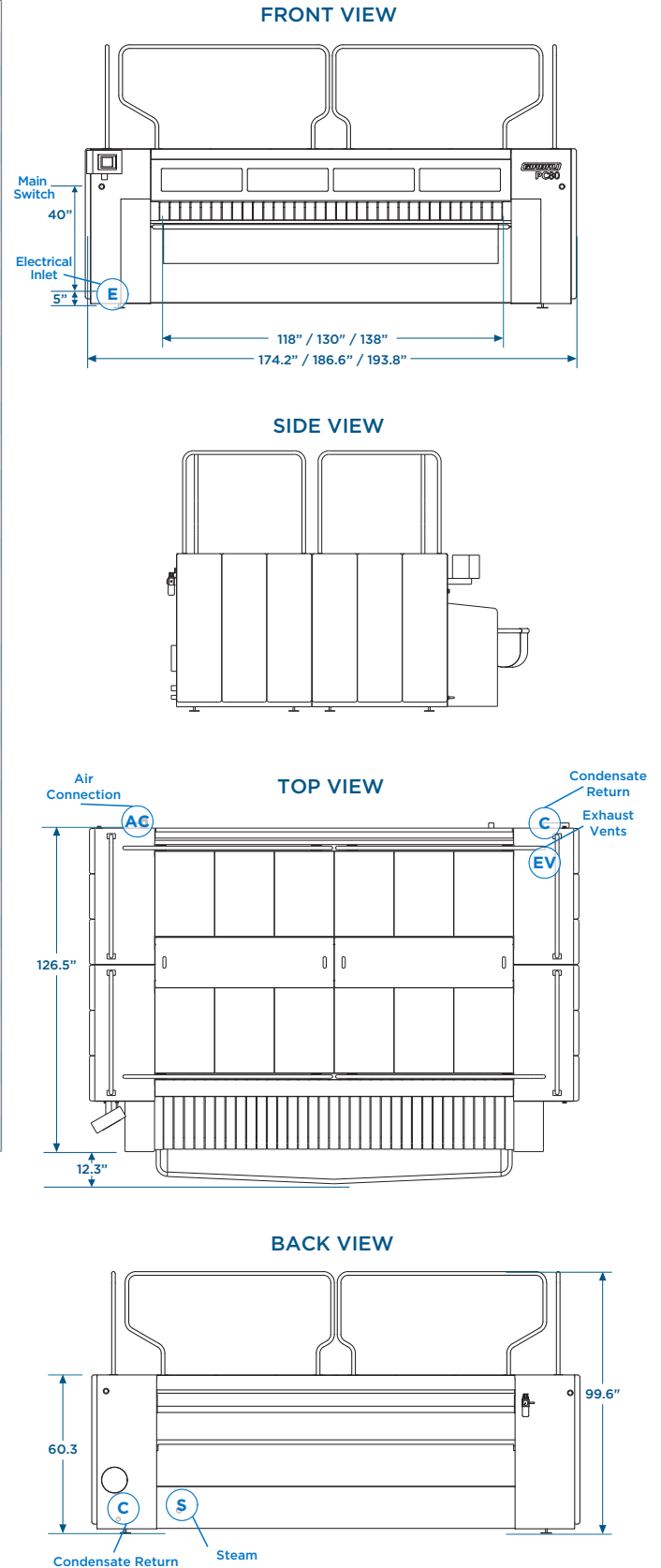


HEAT CAPTURE TECHNOLOGY (OPTIONAL)

PC80

INDUSTRIAL IRONER | 2 ROLL - STEAM

PRODUCT SPECS	PC8030	PC8033	PC8035
Number of Rolls	2		
Roll Diameter <i>inch</i>	32		
Cylinder Length <i>inch</i>	118	130	138
Ironing Speed <i>ft/min</i>	16 - 147		
Heating Surface <i>sq ft</i>	79.9	87.8	93.2
Maximum Heating Power <i>BTU/h</i>	767,732	853,035	904,28
Evaporation Capacity <i>cfm</i>	0.15	0.16	0.17
Steam Connection <i>inch</i>	2		
Steam Consumption <i>lbs/h</i>	904	1,003	1,069
Steam Pressure <i>PSI</i>	116 - 174		
Condensate Return <i>inch</i>	1 1/2		
Number of Exhaust Connections	1		
Ironer Exhaust Diameter <i>inch</i>	10		
Ironer Exhaust Flow <i>cfm</i>	1,271		
Ironer Exhaust Back Pressure (max) <i>inch wc</i>	4		
Electrical Power (all motors) <i>KVA</i>	14.1		
Available Voltages, Wire Conductor, Amp	208-240/60/3, 3W + G, 63 440-480/60/3, 3W + G, 32		
Compressed Air Connection <i>inch</i>	1/2		
Compressed Air Flow <i>cfm</i>	6.6		
Compressed Air Pressure <i>PSI</i>	87 - 94		
Net Weight Total <i>lb</i>	14,959	16,094	16,854
Net Weight First Roll Total <i>lb</i>	7,970	8,598	9,017
Net Weight Total Second Roll <i>lb</i>	6,989	7,496	7,837
Crated Weight Total <i>lb</i>	19,183	19,792	21,272
Crated Weight First Roll <i>lb</i>	10,082	10,087	11,226
Crated Weight Second Roll <i>lb</i>	9,101	9,705	10,046
Machine Width <i>inch</i>	174.1	186.6	193.7
Machine Depth <i>inch</i>	126.5- 138.7*		
Machine Height <i>inch</i>	60.3 - 99.6*		
Crated Roll Width <i>inch</i>	181	201	201
Crated Roll Depth <i>inch</i>	88		
Crated Roll Height <i>inch</i>	87.8		



* Depends on small piece tray and/or handrail.

Specifications subject to change without notice or obligation. Contact Girbau Industrial at (800) 256-1073 for dimensions not shown or for clarification.