

CG165-175+

ProDry2+ Drying Tumbler

ARCHITECTURAL/MECHANICAL
PRODUCT SPECIFICATIONS

ProDry2+

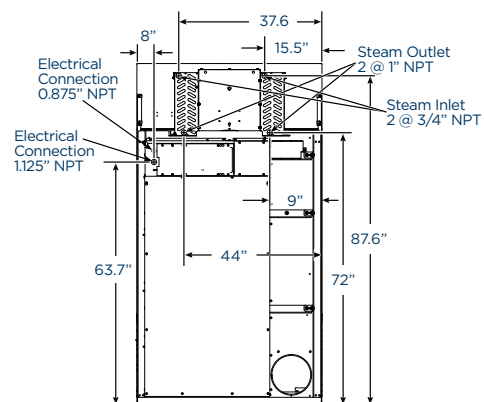
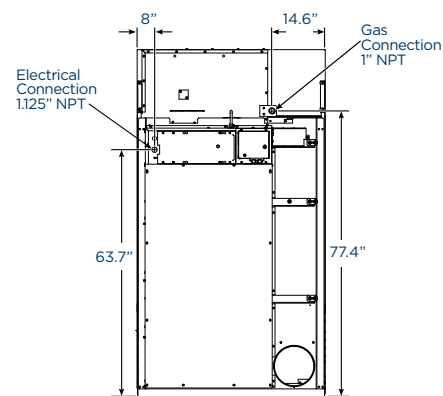
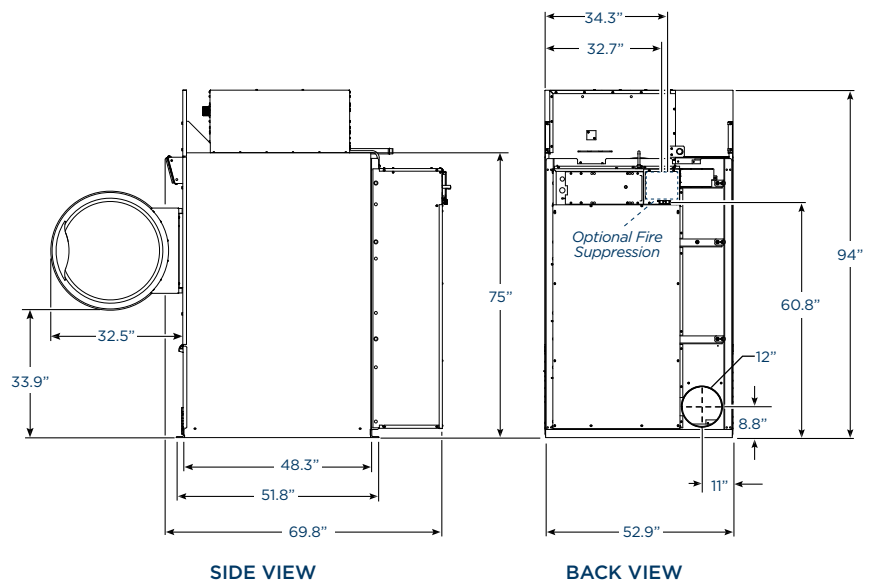
Inverter Drive

PRODUCT SPECS

| | |
|---|------------------|
| Capacity <i>lbs</i> | up to 175 |
| Cylinder Diameter <i>inch</i> | 50.8 |
| Cylinder Depth <i>inch</i> | 42.5 |
| Cylinder Volume <i>cu ft</i> | 49.8 |
| Net Weight <i>lbs</i> | |
| Gas | 1400 |
| Steam | 1550 |
| Crated Weight <i>lbs (standard packaging)</i> | |
| Gas | 1480 |
| Steam | 1630 |
| Machine Width <i>inch</i> | 53.12 |
| Machine Depth <i>inch</i> | 68.85 |
| Machine Height <i>inch</i> | 94 |
| Door Opening <i>inch</i> | 27 |
| Floor to Door <i>inch</i> | 33.9 |
| Shipping Dimensions <i>inch</i> WxDxH | 52.1 x 73.8 x 99 |
| Exhaust Diameter <i>inch</i> | 12 |
| Exhaust Air Flow <i>cfm</i> | 2150 |
| Exhaust Back Pressure (max) <i>WCI</i> | 0.8 |
| Required Makeup Air <i>sq in</i> | 525 |
| Gas Connection <i>inch</i> | 1 NPT |
| Gas Heating <i>BTU/h</i> | 395,000 |
| Gas Pressure (max/recommended/min) | |
| Natural Gas <i>wc</i> | 10.5 / 6.5 / 5 |
| Propane <i>wc</i> | 13 / 11 / 10 |
| Steam Connection <i>inch</i> | 3/4 NPT |
| Condensate Outlet Connection <i>inch</i> | 1 NPT |
| Steam Heating <i>BTU/h</i> at 100 PSI | 265,500 |
| BHP Consumption <i>BHP</i> at 100 PSI | 18.8 |

GAS/STEAM MODELS

| AVAILABLE VOLTAGES | WIRE CONDUCTOR | FULL LOAD AMPS | RECOMMENDED BREAKER SIZE |
|-----------------------|-------------------|----------------------|-----------------------------|
| 200-240/50-60/3 | 3W+G | 11 | 15 |
| 380-415/50-60/3 | 3W+G | 7 | 15 |
| 440-480/50-60/3 | 3W+G | 6 | 15 |



* Specifications subject to change without notice or obligation.
Contact Continental Girbau at (800) 256-1073 for dimensions
not shown or for clarification.